



## SteelHead 9.2 New Feature & Updates

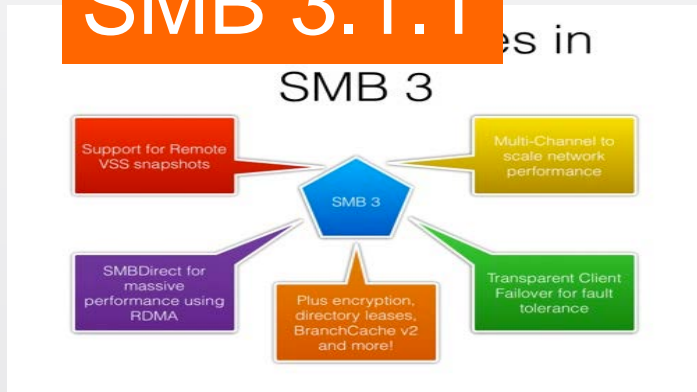
**riverbed**<sup>®</sup>

# Windows 10 / Office 365 / Office 2016

## SteelHead 9.2



SMB 3.1.1



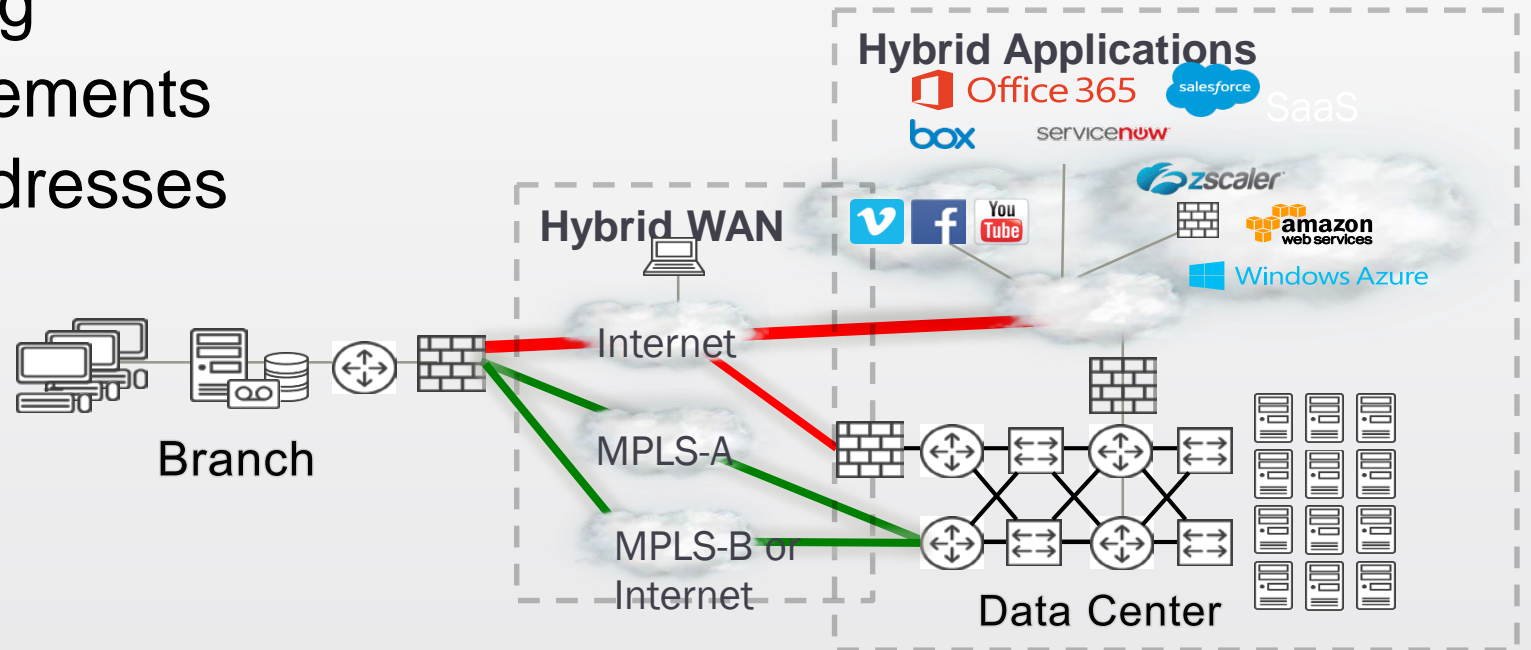
MAPI over HTTP



# Hybrid Networking Improvements

## SteelHead 9.2

- Config Push Support
- PSIC Auto Channel Config
- PSIC Throughput Improvements
- User-Definable Probe Addresses
- PS Transit Site Support
- Scale to 500



Classify

Forward

Monitor

Failover

# SSL Acceleration Improvements

## SteelHead 9.2

- SSL Proxy Cert Enhancements
- SSL Passthrough Expired Proxy Cert
- Gemalto HSM
- TLS 1.2 Hardening



# Virtual and Cloud Improvements

## SteelHead 9.2



- **NEW!** KVM-based SteelHead Virtual Edition



- Upgraded Cloud SteelHead in Microsoft Azure
  - CX-5070c

# RiOS 9.2.0 Release Products

- SteelHead “Devon” (xx55, xx70)
- SteelCentral Controller for SteelHead (CMC 8150, SCC 1000)
- Interceptor (9350, 9600)

Thank You